

IKEDA GALLERY Tokyo

B-604, 1-4-11 Katsushima, Shinagawa, Tokyo 140-0012 JAPAN TEL : 090-6570-2141

E-mail: tokyo@akiraikedagallery.net <http://www.akiraikedagallery.com/>

DAVID RABINOWITCH

January 10 – March 30, 2019

Exhibition List

1.

DAVID RABINOWITCH

“6 Sided Plane in 5 Masses and 3 Scales with 2 Free Regions “,
1976/2018

Hot Rolled Steel

Approximate Sculpture Size: 813 x 620x 75 mm

(No. 5)

Works Images



2.

DAVID RABINOWITCH

“4 Sided Plane in 3 Masses with Free region”, 1976/2018

Hot Rolled Steel

Approximate Sculpture Size: 750 x 425 x 75 mm

(No. 6)



3.

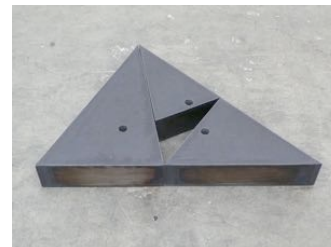
DAVID RABINOWITCH

“3 Sided Plane with Vertical Construction and Free Region”,
1975/2018

Hot Rolled Steel

Approximate Sculpture Size: 755 x 484 x 100 mm

(No. 7)



4.

DAVID RABINOWITCH

“4 Sided Plane in 3 Masses and 2 Scales with Free Region”,
1975/2018

Hot Rolled Steel

Approximate Sculpture Size: 625 x 420 x 75 mm

(No. 9)



5.

DAVID RABINOWITCH

“8 Sided Plane in 7 Masses and 2 Scales with Free Region”,
1975/2018

Hot Rolled Steel

Approximate Sculpture Size: 547 x 444 x 100 mm

(No. 10)



IKEDA GALLERY Tokyo

B-604, 1-4-11 Katsushima, Shinagawa, Tokyo 140-0012 JAPAN TEL : 090-6570-2141
E-mail: tokyo@akiraikedagallery.net <http://www.akiraikedagallery.com/>

6.

DAVID RABINOWITCH

“2 Sided Plane in 4 Masses and 2 Scales”, 1978/2018

Hot Rolled Steel

Approximate Sculpture Size: 612 x 307 x 50 mm

(No. 11)



7.

DAVID RABINOWITCH

“4 Sided Plane in 3 Masses and 1 Scale with Free Region”, 1975/2018

Hot Rolled Steel

Approximate Sculpture Size: 384 x 304 x 75 mm

(No. 12)



8.

DAVID RABINOWITCH

“6 Sided Domain in 3 Masses with cut hole and Vertical Construction”, 1976/2018

Hot Rolled Steel

Approximate Sculpture Size: 1,127 x 700 x 50 mm

(No. 13)



9.

DAVID RABINOWITCH

“7 Sided Plane in 3 Masses and 4 Scales with Cut Hole”, 1976/2018

Hot Rolled Steel

Approximate Sculpture Size: 710 x 505 x 50 mm

(No. 14)



10.

DAVID RABINOWITCH

“5 Sided Plane in 3 Masses and 2 Scales with Free Region”, 1976/2018

Hot Rolled Steel

Approximate Sculpture Size: 711 x 570 x 100 mm

(No. 15)



11.

DAVID RABINOWITCH

“Linear Mass in 3 Masses and 3 Scales”, 1975/2018

Hot Rolled Steel

Approximate Sculpture Size: 730 x 742 x 125 mm

(No. 16)

